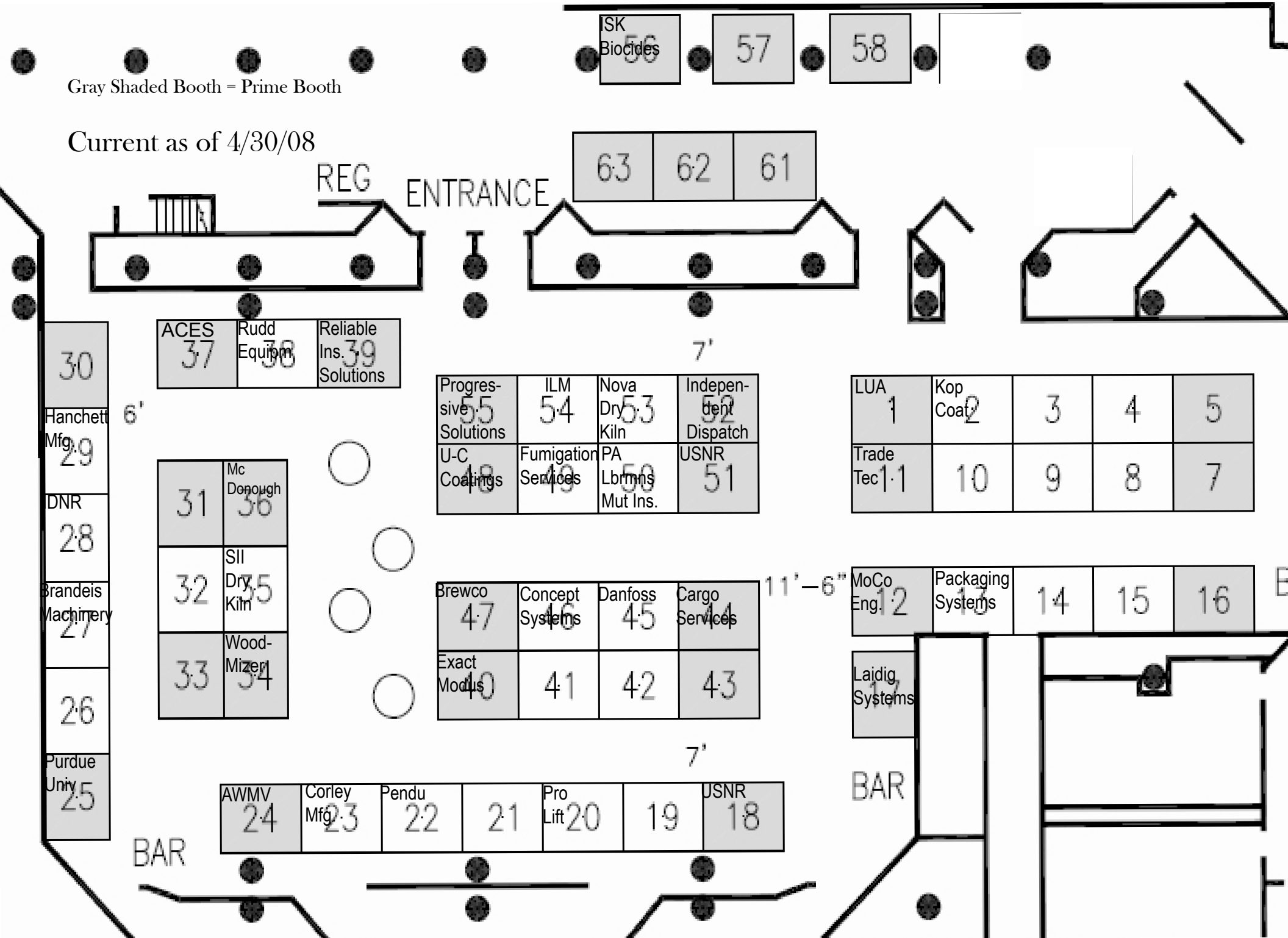


**IHLA CONVENTION & EXPOSITION - FEBRUARY 4-5, 2009  
HYATT REGENCY HOTEL - DOWNTOWN INDIANAPOLIS**

Gray Shaded Booth = Prime Booth

Current as of 4/30/08



ISK  
Biocides  
56

57

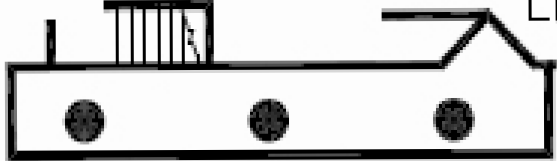
58

63

62

61

REG ENTRANCE



ACES  
37

Rudd  
Equipm  
38

Reliable  
Ins.  
Solutions  
39

30

Hanchett  
Mfg.  
29

DNR  
28

Brandeis  
Machinery  
27

26

Purdue  
Univ  
25

31  
Mc  
Donough  
36

32  
SII  
Dry  
Kiln  
35

33  
Wood-  
Mizer  
34

Progres-  
sive  
Solutions  
55

ILM  
54

Nova  
Dry-  
Kiln  
53

Independ-  
ent  
Dispatch  
52

U-C  
Coatings  
48

Fumigation  
Services  
49

PA  
Lbrms  
Mut Ins.  
50

USNR  
51

LUA  
1

Kop  
Coat  
2

3

4

5

Trade  
Tec  
1-1

10

9

8

7

Brewco  
47

Concept  
Systems  
46

Danfoss  
45

Cargo  
Services  
44

Exact  
Modus  
40

41

42

43

MoCo  
Eng  
12

Packaging  
Systems  
13

14

15

16

Laidig  
Systems  
17

BAR

BAR

AWMV  
24

Corley  
Mfg.  
23

Pendu  
22

21

Pro  
Lift  
20

19

USNR  
18

11'-6"

7'

